

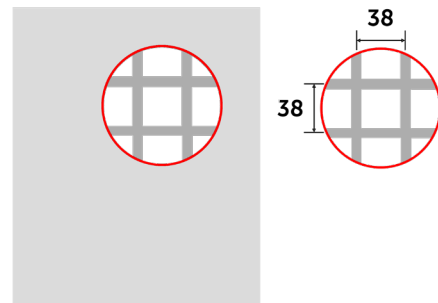
BM Steel's Solid Top Moulded GRP Grating Panels are a lightweight and durable solution for walkways and platforms being up to 50% lighter than steel. The panel is available in a various thickness and has a 3mm solid grip plate to the upper side of the panel.

The Isophthalic Polyester Grating Panels are suitable for general use where factors such as high-strength, non-conductive, lightweight and corrosion resistant applications are required. Our GRP Covered grating offers a strong, level surface for foot or cart traffic and provides approximately 50% higher stiffness values than that of open mesh grating. Its standard grit-top cover assures secure footing.

Ideal applications include food processing facilities where covered grating walkways prohibit contamination to conveyor or work surfaces below; facilities where covered grating provides a walking surface and controls subsurface odours; walkways over tank tops and vats and solid flooring where narrow heels might present a tripping hazard with open mesh grating.

Brand: B+M Steel
Grade: Isophthalic FR Polyester Resin Class 2
Thickness: 25mm + 3mm Plate
Open Area: N/A
Load Bearing Centres: 38x38mm
Load Bearing Bar Size: 38x7mm (tapered)
Fire Rating: ASTM E84 Class A
Finish: Gritted Solid Top
Panel Weight: 18.1kg/m²
Panel Size: 1220x3660mm (others available upon request)

PLAN VIEW

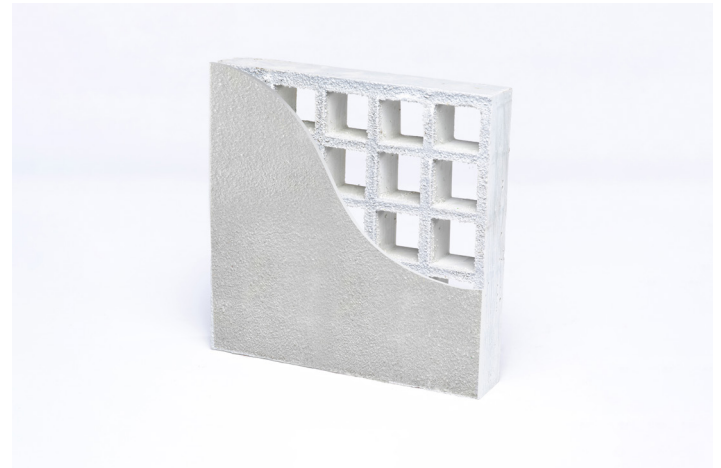


IN STOCK

Product Code	Colour
MFGRP-28-SOLID-GRY-7043	RAL 7043
MFGRP-28-SOLID-GRY-7047	RAL 7047

TO ORDER

Product Code	Colour
MFGRP-28-SOLID-GRN-6001	RAL 6001
MFGRP-28-SOLID-YEL-1003	RAL 1003
MFGRP-28-SOLID-SND-1001	RAL 1001



Uniform Distributed Load in KG/sqm (Deflection in mm)

Span in mm	100	200	300	500	700	1000	2000
400	0.04	0.08	0.12	0.21	0.29	0.41	0.82
600	0.21	0.42	0.62	1.04	1.45	2.08	4.15
800	0.66	1.31	1.97	3.28	4.59	6.56	13.12
1000	1.60	3.20	4.80	8.00	11.21	-	-