

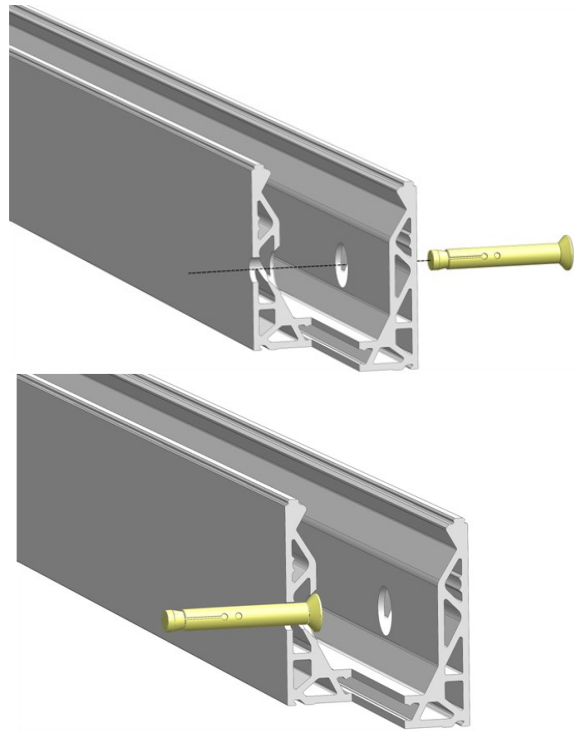
EazyFit 1.5kN

Glass Balustrade System

Fitting instructions

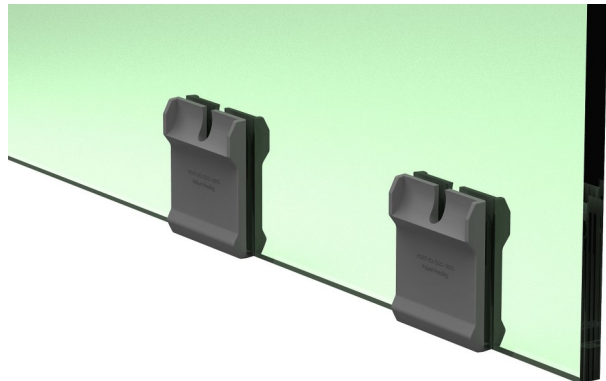
1. Side Rail

The aluminium side rail should be placed onto its designated position and the holes marked onto the substrate for drilling. Once the shoe is lined up with the holes and level the fixings should be tightened up to make the channel rigid. The fixings must be tightened in accordance with the manufacturers instructions. M12 bolts must be used.



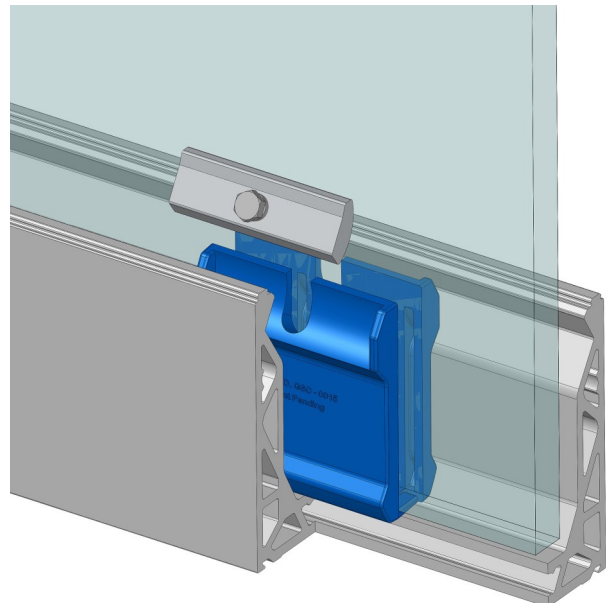
2. Glass Slip Clamp Fitting

The glass slip clamps need to be placed onto the bottom of the glass. This requires lifting the glass off the floor sufficiently and pushing into place or applying the clamps to the top of the glass and rotating into the channel. The slip clamps require even spacing using four per metre. On a metre wide panel the clamps need to be positioned on either end of the glass and should be located 125mm in from the edge of the glass and then at 250mm centres. The glass can now be lowered into the channel.



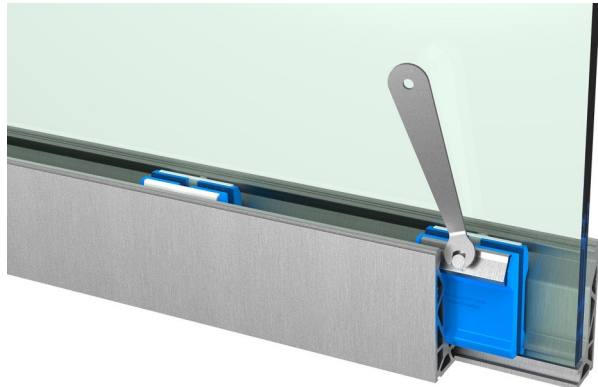
3. Glass Clamp Bar Fitting

Once the glass is fitted in place the clamp bars must be positioned into the top of each glass slip clamp. Screw the bolt into the clamp bar until the head of the bolt just reaches the bar. The shaped side of the bar will sit nearest to the glass. Each clamp bar can now be inserted into the glass slip clamps. As shown in the image to the right.



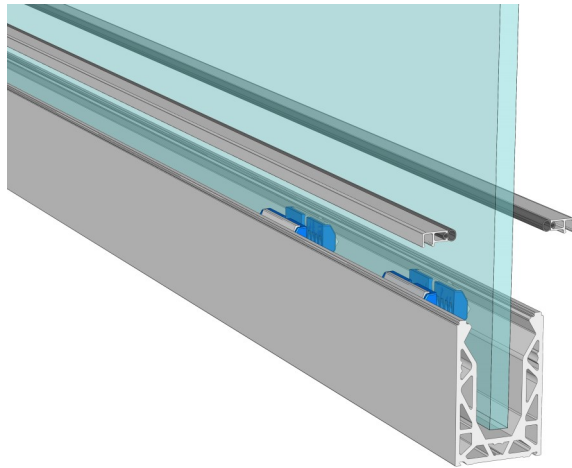
4. Getting Glass Level and Tightening Bolts

Place a spirit level on the glass to get the glass in the correct position. The bolts now need tightening equally to keep the same pressures on the glass. To adjust the glass into position the bolts can be unscrewed back towards the wall of the channel. To achieve the correct positioning firstly square up and level each end of the glass and tighten the bolts. Then tighten the bolts on the intermediate clamp bars. Give the bolts an additional half turn to ensure that the glass is securely held in place. You must use an adhesive, such as Loctite, on the threads.



5. Top Seal Strip & Side Cladding

The gasket requires feeding into the side cladding and/or top bead supplied. Do not stretch the gasket. Once the gasket is flush with each end of the strip it needs to be cut. The profile now needs to be clipped onto the top of the channel. This can be done by pressing firmly down on the profile working from one end to the other. A soft mallet may be required. The side cladding needs additional securing using double sided foam tape or silicone placed in the lower groove.



6. Cleaning

Once everything is correctly in place and the job is complete, the glass and channel need to be cleaned. Use a non abrasive glass cleaner on the glass and warm soapy water on the Posiglaze channel. We also recommend a soft sponge or cloth, again to

We have tried to make the system as simple and easy to install as possible, however should you not feel confident enough to fit this please contact a reputable glazier or builder.

Should any problems arise please don't hesitate to contact us:

B+M Architectural
Specialists in architectural glass systems

Tel: 0114 254 3226
sales@bmarchitectural.com

bmarchitectural.com